

ST JOSEPH'S CHURCH HALL  
WETHERBY

Preliminary Design Ideas

# IDEAS ABOUT REFURBISHMENT

**No decision has been made on whether a Hall refurbishment is going ahead. This is an initial review of possibilities only!**

**To create the best design for us we must know what we want and value as a parish, and an idea of what the Hall might be.**

- **We have undertaken**
  - a questionnaire survey of our parish community
  - consultation with some Hall users and other venues in Wetherby
  - St Joseph's School have kindly consulted with parents, staff and Governors.
- **We have explored various possible layouts of the Hall to see what might be possible.**

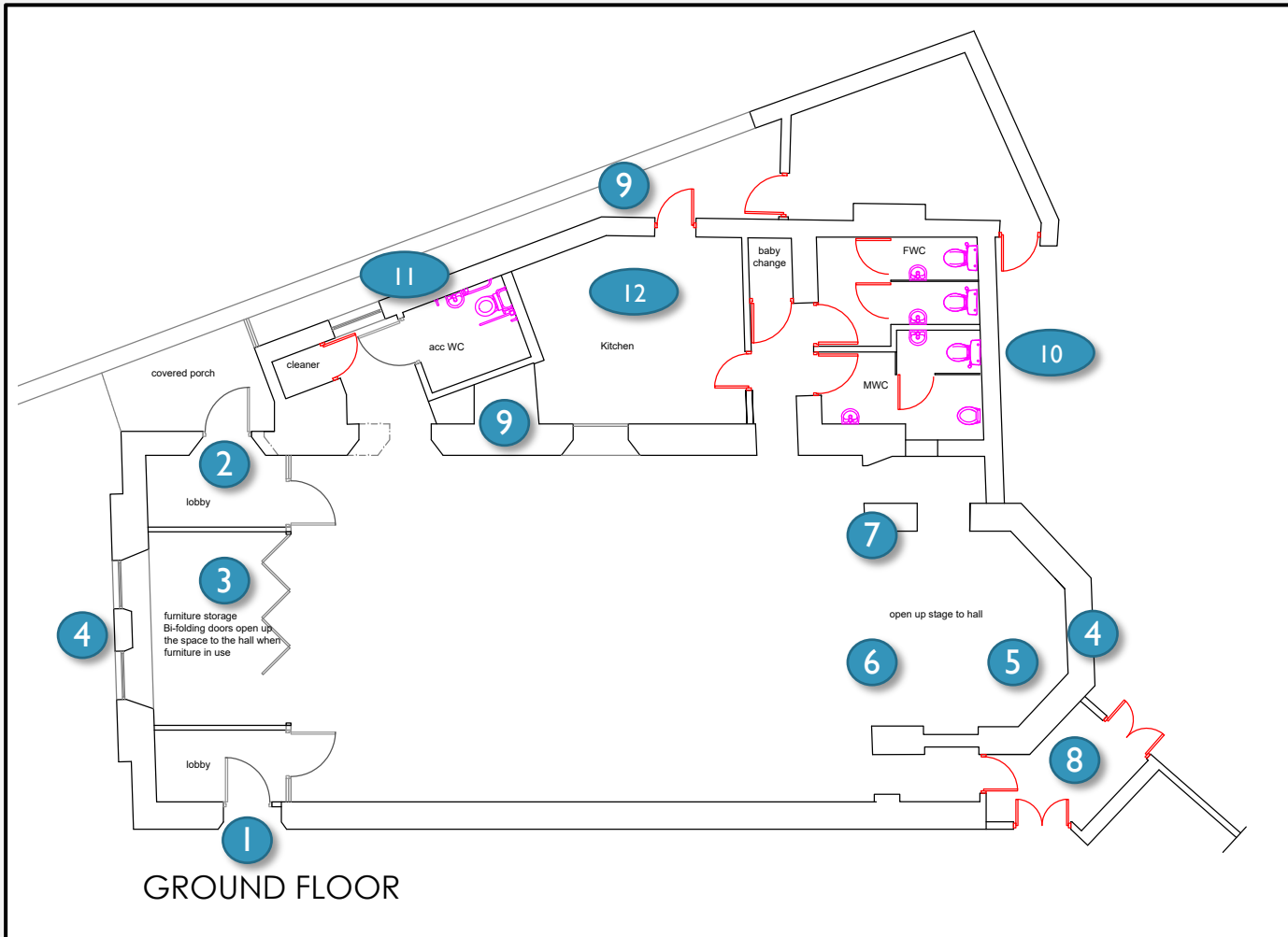
# WHAT YOU WILL FIND HERE

- **Copies of the consultation report are in the Parish/Downloads section of the parish website**
  - Please download a copy of the report if you can
  - If you are not able to do this, take away a paper copy - from a COVID point of view, don't read it here.
- **The layout of the Hall shown is a sketch only – an idea!**
  - It is our latest, and responds to the results of the report
  - If you want to comment on the sketch after reading the explanatory notes, use a sticker and your own pen or send feedback to [davidaspost@gmail.com](mailto:davidaspost@gmail.com)
  - Let us know who you are if you want us to get back to you.

# GENERAL CONSIDERATIONS

- **The energy use of the Hall is costly and we wish to reduce our carbon footprint in line with Catholic Church policy and common sense for our future**
  - The roof of the Hall must be insulated at some point
  - Although we have a new boiler, the heating system is complicated and inefficient – one radiator doesn't work at all
  - We have some draughty windows and a very draughty entrance.
- **The site and building are constraining**
  - The site boundary mostly coincides with the Hall's walls already
  - Underneath everything we have what was a pretty Victorian church – with thick walls and buttresses that would be expensive to remodel.
- **We need to upgrade the power and lighting.**

# THE CONCEPT - A SKETCH\*



a + j architects

Ardnacree  
School Lane  
Collingham  
Wetherby  
LS22 5BD

tel: 01937 579200

\* Many aspects to check

5-Mar-21

## NOTES ON THE SKETCH - ACCESS & STORAGE

1. *Easy entrance from the Narthex is valued and needs to be retained.*
  2. *The side entrance is valued easy-access but there is no lobby – presenting a safety risk for children and a heat-loss problem.*
  3. *Furniture storage takes up space but adds to clutter. But a new storage area would be both practical and more attractive: when the furniture is laid out in the Hall, the bi-fold doors could be opened up to include this space in the body of the Hall.*
  4. *We may need some sort of remote control blackout for the windows to allow daytime and summer-evening presentations to be visible.*
- The idea is to add a single story glazed-frame section to the back of the Hall to provide lobby(s) and storage.
  - The top of the structure would come level with the existing window sill.
  - We realised that the empty furniture store could be part of the Hall, creating an attractive cruciform shape. This can also act as a bar for events, or a break-out space for smaller and quiet sessions.
  - We can rethink the size and design of the tables. Tilt-top tables on castors are more ergonomic to set up and could be a little larger than the existing ones.

## NOTES ON THE LAYOUT - THE OLD APSE

5. *The stain glass windows and apse ceiling are attractive, but draughty and concealed by the stage & curtain.*
  6. *If the stage is removed, there is still a step and a heating pipe beneath to consider. If this step proves costly to remove, we could have a 'dais' for top-tables, concerts etc.*
  7. *Under the plasterwork and boxing-in above the front of the stage are an attractive arch and a pair of smaller arches on either side.*
  8. *The fire escape to the rear needs to be retained.*
- The idea is to open up the apse to become part of the space once again, integrating the attractive old features into a brighter whole.
  - Options for using the apse as a separate meeting room were explored, but with the Parish placing a premium on Hall size and flexibility, it seems better, simpler and cheaper to include the space in the hall itself.
  - We explored the option of moving the Hall entrance to the car park at the rear. However, we felt that this would be rejected by LCC with no access to a road or path.

## NOTES ON THE LAYOUT - THE SERVICE AREA

9. *The 'wet' services are in a line backing on to a gully housing difficult-to-move drains and the gas pipe. The walls are thick and old buttresses well-hidden!*
  10. *The old Green Room, formerly the Sacristy, is redundant and windowless. The existing cramped and utilitarian toilets could be better sited here.*
  11. *This creates space for a fully compliant disabled toilet on site. Many noted in the survey that the Hall has no disabled WC at all.*
  12. *The kitchen is under-equipped by today's standards, storage is awkward to access; things are quite cramped.*
- The idea is to re-use as much as possible of the existing structure and wet services to reduce cost, complexity and to make the absolute most of what we have.
  - The Hall wall conceals the old arched windows through which most of the existing openings go. We should reuse these openings again, and we may be able to bring out the Victorian features.
  - By being careful with the structural changes (without compromising options for the future) we could invest in better technology, kitchen equipment and furniture.



## NEXT STEPS

- **Once we get feedback from the Parish and school, we will move towards a more accurate plan and programme:**
  - I. Investigation of ideas for insulation and heating overhaul
  - II. With the Diocese, investigation of community and green grants available - including the criteria that we would need to meet to qualify
  - III. Detailed investigation of structure and fabric issues and development of detailed drawings and outline specification
  - IV. Development of a cost plan and review with Parish and Diocese
  - V. Dialogue with grant-awarding bodies and final Business Case
- **With all investigations complete we would be ready for a final sign-off from the Diocese and Parish.**

Canon Nunan, Davida Hamilton, Liz Vickerstaff, David Rigby,  
Jo Parascandalo, Geoff Waterfield and Andy Minshall